

Corpus Christi, TX



SIGNATURE SERIES CRESCENT TRANSIT SHELTERS

YOUR COMMUNITY. YOUR STYLE. YOUR SIGNATURE.

LOCATION

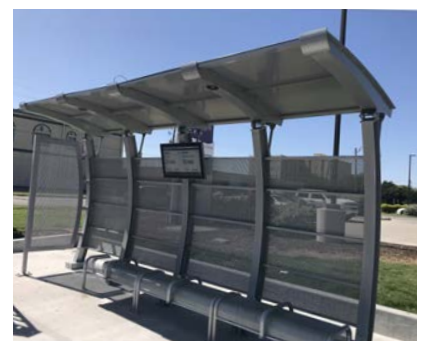
Located on the Gulf of Mexico, the city of Corpus Christi in the state of Texas is tucked into a bay, with its beaches sheltered by Padre and Mustang islands.

Founded in 1838-39, by adventurer Colonel Henry Lawrence Kinney, Corpus Christi began as a frontier trading post. Known as Kinney's Trading Post or Kinney's Ranch. The city incorporated in 1852 taking on the name Corpus Christi. Per the City it, "it strives to be progressive in updating its infrastructure and planning for future resources, annually updating a comprehensive capital improvement program."

PROJECT SCOPE

Tolar is providing much-needed shade coverage in Texas with 40 bus shelters per month being shipped to Corpus Christi as part of a three-year contract. Tolar is also installing each of the shelters throughout Corpus Christi Regional Transportation Authority's service area.

Our stylish Signature Crescent model are available in ready-to-assemble sizes (8-17 foot lengths and 3-7 foot depths) featuring solid aluminum roof panels and optional polycarbonate roof panels secured by gasketed pressure ribs; custom curved aluminum I-beam rear posts with fixed base plates for surface mounting and cantilever design. Perforated aluminum panels (also available in polycarbonate) are located in the rear wall and down stream end wall. Solar-powered LED illumination under the shelter roof provides passenger security. Slat rail benches with seat-delineators that also serve as arm rests sport comfortable back rest perfect for revenue-generating advertising. Additionally, larger 17-foot shelters feature perforated metal benches with seat delineators and solar-powered 32-inch ePaper bus information displays with self-adjusting light and brightness based on sunset, sunrise, and ambient light detected via photosensor. The agency-branded display connects passengers to the next three bus arrival times with ADA-compliant large tile numbering. A QR code provides quick access to real-time information on mobile devices to keep passengers connected well after departing the bus stop.



SIGNATURE SERIES TRANSIT SHELTERS

ON THE STREETS ACROSS AMERICA

(size and design examples)



SIGNATURE VOYAGER MAX LAKE GEORGE, NY
Beautifully designed to embrace the picturesque tourist town of Lake George.

A 62-ft custom axel open canopy shelter with 8-mm bronze twin-wall polycarbonate roof panels with solar illumination. Mesa platform benches with seat delineators, custom passenger information kiosk, and durable baked premium powder coat finish complete the shelter.



CUSTOM SIGNATURE EL SEGUNDO, CA
Modern with a strong statement, this shelter reflects the character of this busy office park and shopping center.

This 8-ft custom flat roof shelter features all steel construction, IPE wood slat decorative ceiling, and 1/4" aluminum roof panels offset with brushed stainless steel. Finished in super durable baked powder coat finish.

CUSTOM SIGNATURE AUSTIN, TX
Part of Capital Metro's Coordinated Bus Stop Street Furniture Program delivering functional street furniture of exceptional design quality.

A custom Signature 12-ft shelter with radius roof, rolled posts rear wind screen, and branding banner.



SIGNATURE CRESCENT TAMPA, FL
A "Kit of Parts" approach.

These 13-ft bus shelters were created in keeping with Tolar's "Kit of Parts" approach. Available with optional end walls, agency branding, dusk-to-dawn solar powered LED illumination and a SmartLink controller allowing for remote monitoring of the solar performance. Amenities include a Mesa bench with a center armrest and 32-gallon trash receptacle.



SIGNATURE SUNSET SAN DIEGO, CA
Three decades designing and fabricating bus shelters, street furniture, and digital solutions.

17-ft advertising shelters with agency branding make a big impact on the streets of San Diego. Passengers enjoy an integrated passenger information display case, Mesa benches, pole mounted trash/recycle bin, and dusk-to-dawn solar illumination in the roof and display case.



CUSTOM VOYAGER SAN LUIS OBISPO, CA
Maximizing passenger amenities for comfort and convenience.

Four 17-ft spoke-style cantilever shelters offer flexible length adjustments to provide maximum shade. Amenities include steel strap benches, low-draw LED lighting, and back-to-back media display kiosks.

CUSTOM SIGNATURE COLUMBIA, SC
Branded shelters in various configurations with minimal unique parts to customize the transit riding experience.

This custom Signature 16-ft shelter is part of a suite of shelters for The COMET. Featuring dusk-to-dawn solar LED illumination, and branded perforated aluminum walls, these shelters were designed with easy installation in mind and a kit of amenities that vary depending on location throughout two counties.



SIGNATURE EMPIRE ST. PETERSBURG, FL

High visibility, large capacity shelters provide access to multiple destinations.

This 32-ft shelter sports a modern Empire flat angled roof with a 32-ft x 6-ft dripline and electrical access in rear post to power LED security lighting. Perforated aluminium rear panels showcase custom printed agency logo while 3/8" tempered glass end panels feature high visibility branding.



SIGNATURE PACIFIC ESPANOLA, NM
Curved translucent roof and walls provide visibility beyond the shelter framing the beautiful surrounding landscape.

This brightly-colored 14-ft shelter comes with a flat advertising kiosk, perforated metal walls for airflow, opal polycarbonate curved roof panels, and a beautiful powder coat finish with easy-to-read branding.



These styles are representative of product options within this series. Scan the QR code or visit www.tolarmfg.com for additional ideas, options and specifications.

