

Lansing, Michigan



EURO SERIES TRANSIT SHELTERS

AMERICAN QUALITY. EUROPEAN FLAIR. MODERN SENSIBILITIES.

LOCATION

The capital of Michigan, Lansing dates back to the 1870s. Among many attractions, the city sports the R.E. Olds Transportation Museum including classic and contemporary Oldsmobile cars. Meanwhile, public transportation is a featured highlight provided by Capital Area Transportation Authority (CATA) since 1972 fulfilling its mission to, “meet the mobility needs of our region by providing innovative solutions in partnership with the communities we serve.”

PROJECT SCOPE

Tolar Manufacturing is honored to help CATA fulfill its mission to provide innovative solutions through the delivery of our Euro Series transit shelters. These shelters give a nod to our European neighbors and their modern and fashionable sensibilities. A combination of sleek and stylish yet strong and sturdy, our Euro bus shelters showcase designs with durability that result in a highly functional

eye-catching structure that communities warmly welcome into their public streetscape.

These 10-foot long Euro Series bus shelters built for Lansing, feature a modern cantilever design while delivering the latest in passenger real-time technology with a 32-inch ePaper display.

The dome roof design with 1/4-in bronze-tinted twin-wall polycarbonate roof panels are secured by gasketed pressure ribs and the roof end bells are enclosed with 1/8-in clear polycarbonate. Other features include, 3/8-in clear tempered glass in the rear and upstream half end wall; flat back-to-back advertising kiosk with two side hinged display doors containing 3/16-in clear tempered glass in downstream end wall; SCH 40 aluminum pipe support posts with round adjustable leveling shoes for surface mounting and leveling on a suitable concrete pad; and stainless steel anchors.

Amenities include, 5-ft Mesa bench with seat delineators and HDPE slats and dusk-to-dawn solar lighting under the shelter roof.



ON THE STREETS ACROSS AMERICA

(size and design examples)



LOUISVILLE, KY

Euro shelters have large side walls perfect for showcasing passenger information or revenue-generating advertising.

This 10-ft shelter features a media display kiosk, integrated gutter with rain diverter, 3/8-in clear tempered glass walls, and Mesa platform bench with recycled slats, some with seat delineators.



CAMBRIDGE, MA

Sporting clear walls, passenger visibility is high while weather protection remains a priority.

22-ft Euro dome roof shelter features bronze Lexan roof panels supported by custom posts with escutcheons, 3/8-in clear glass at the rear, end, and front walls, and perforated metal bench. Shown with LED solar lighting.

BRITISH COLUMBIA, CN

Modern Euro shelters can be customized to include three-sided weather protection.

This 13-ft Euro shelter includes a wide roof, integrated gutter with drain and leaf catcher, clear acrylic roof panels, back-to-back LED illuminated advertising kiosk, 3/8-in glass walls, and an 88-in extruded aluminum framed recycle slat bench with seat delineators.



SAN MATEO, CA

Spun escutcheon shoe covers add a finishing touch to custom-color coated Euro shelters.

This Euro 17-ft shelter features bronze Lexan roof panels, back-to-back solar illuminated advertising kiosk, solar LED roof lighting, branded glass walls, integrated map case, and 6-ft perforated metal bench with seat delineators.



DAVENPORT, IA

Euro Shelter series can be tailored to your project, your budget, and your community.

22-ft Euro shelter features bronze Lexan roof panels, solar-powered LED illuminated advertising kiosk, custom agency-branded glass and partial 3/8" clear glass front wind screen.



HAWTHORNE, CA

Euro Series bus shelters offer lengths up to 24-ft and widths from 4 to 6 feet.

This Euro dome roof, 24-ft shelter includes herringbone rear and end walls, integrated end wall map case, spun escutcheon shoe covers, and 6-ft steel strap benches with back rests.

RALEIGH, NC

Euro shelters offers many wall options for weather protection while showcasing agency/city branding.

This 10-ft shelter includes all-aluminum construction with canti-levered roof and half-end 3/8-in clear tempered glass walls, UV-protected polycarbonate panels, and dusk-to-dawn UL-listed solar power.



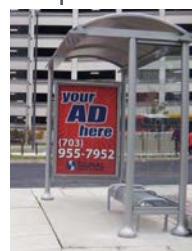
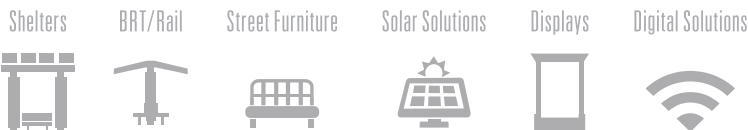
MIAMI, FL

Branded shelters in various configurations with minimal unique parts customize the transit riding experience.

This 13-ft Euro max roof shelter features white Lexan roof panels with 3/8-in glass walls, aluminum support posts, city logo on rear glass, and 8-ft perforated metal bench with seat delineators.



These styles are representative of product options within this series. Scan the QR code or visit www.tolarmfg.com for additional ideas, options and specifications.



TYSONS CORNER, VA

Modern sensibilities embrace the character of the surrounding business community.

This 10-ft Euro bus shelter features bronze lexan roof panels, integrated gutter, drain and leaf catcher, back-to-back LED illuminated advertising kiosk, LED roof lighting, 3/8-inch glass walls, standard aluminum support posts with escutcheons, and 5-ft perforated metal bench with two seat delineators.